

HIGHLIGHTS OF PRESCRIBING INFORMATION

These highlights do not include all the information needed to use HYCAMTIN FOR INJECTION safely and effectively. See full prescribing information for HYCAMTIN FOR INJECTION.

HYCAMTIN® (topotecan) for injection, for intravenous use
Initial U.S. Approval: 1996

WARNING: MYELOSUPPRESSION

See full prescribing information for complete boxed warning.

HYCAMTIN can cause severe myelosuppression. Administer first cycle only to patients with baseline neutrophil counts greater than or equal to 1,500/mm³ and platelet counts greater than or equal to 100,000/mm³. Monitor blood cell counts (2.4, 5.1).

INDICATIONS AND USAGE

HYCAMTIN for injection is a topoisomerase inhibitor indicated for treatment of:

- Patients with metastatic ovarian cancer after disease progression on or after initial or subsequent chemotherapy, as a single agent (1.1)
- Patients with small cell lung cancer (SCLC) platinum-sensitive disease who progressed at least 60 days after initiation of first-line chemotherapy, as a single agent (1.2)
- Patients with Stage IV-B, recurrent, or persistent cervical cancer which is not amenable to curative treatment, in combination with cisplatin (1.3)

DOSAGE AND ADMINISTRATION

- Ovarian Cancer and Small Cell Lung Cancer: 1.5 mg/m² by intravenous infusion over 30 minutes daily for 5 consecutive days, starting on Day 1 of a 21-day cycle (2.1, 2.2)
- Cervical Cancer: 0.75 mg/m² by intravenous infusion over 30 minutes on Days 1, 2, and 3, with cisplatin 50 mg/m² on Day 1, of a 21-day cycle (2.3)
- Renal Impairment: Reduce dose if creatinine clearance (CLcr) 20 to 39 mL/min (2.6)

DOSAGE FORMS AND STRENGTHS

For injection: 4 mg (free base) lyophilized powder in single-dose vial (3)

CONTRAINDICATIONS

- History of severe hypersensitivity reactions to topotecan (4)

WARNINGS AND PRECAUTIONS

- Interstitial Lung Disease (ILD): Fatal cases have occurred. Permanently discontinue if ILD confirmed. (5.2)
- Extravasation and Tissue Injury: Severe cases have occurred. If extravasation occurs, immediately stop administration and institute recommended management procedures. (5.3)
- Embryo-Fetal Toxicity: Can cause fetal harm. Advise patients of potential risk to the fetus and to use effective contraception. (5.4, 8.1, 8.3)

ADVERSE REACTIONS

Ovarian Cancer

- The most common Grade 3 or 4 hematologic adverse reactions (incidence > 5%) were neutropenia, anemia, thrombocytopenia, and febrile neutropenia. (6.1)
- The most common (incidence > 5%) non-hematologic adverse reactions (all Grades) were nausea, vomiting, fatigue, diarrhea, and dyspnea. (6.1)

SCLC

- The most common Grade 3 or 4 hematologic adverse reactions were (incidence > 5%) neutropenia, anemia, thrombocytopenia, and febrile neutropenia. (6.1)
- The most common (incidence > 5%) non-hematologic adverse reactions (all Grades) were asthenia, dyspnea, nausea, pneumonia, abdominal pain, and fatigue. (6.1)

Cervical Cancer

- The most common Grade 3 or 4 hematologic adverse reactions were (incidence > 5%) neutropenia, anemia, and thrombocytopenia. (6.1)
- The most common (incidence > 25% and ≥ 2% higher than cisplatin alone) non-hematologic adverse reactions were pain, vomiting, and infection/febrile neutropenia. (6.1)

To report SUSPECTED ADVERSE REACTIONS, contact Novartis Pharmaceuticals Corporation at 1-888-669-6682 or FDA at 1-800-FDA-1088 or www.fda.gov/medwatch.

USE IN SPECIFIC POPULATIONS

- Lactation: Advise not to breastfeed. (8.2)

See 17 for PATIENT COUNSELING INFORMATION.

Revised: 9/2018

FULL PRESCRIBING INFORMATION: CONTENTS*

WARNING: MYELOSUPPRESSION

1 INDICATIONS AND USAGE

- 1.1 Ovarian Cancer
- 1.2 Small Cell Lung Cancer
- 1.3 Cervical Cancer

2 DOSAGE AND ADMINISTRATION

- 2.2 Recommended Dosage for Ovarian Cancer
- 2.3 Recommended Dosage for Small Cell Lung Cancer (SCLC)
- 2.4 Recommended Dosage for Cervical Cancer
- 2.5 Dose Modifications for Adverse Reactions
- 2.6 Dosage Modification for Renal Impairment
- 2.7 Preparation and Intravenous Administration

3 DOSAGE FORMS AND STRENGTHS

4 CONTRAINDICATIONS

5 WARNINGS AND PRECAUTIONS

- 5.1 Myelosuppression
- 5.2 Interstitial Lung Disease
- 5.3 Extravasation and Tissue Injury
- 5.4 Embryo-Fetal Toxicity

6 ADVERSE REACTIONS

- 6.1 Clinical Trials Experience
- 6.2 Postmarketing Experience

8 USE IN SPECIFIC POPULATIONS

- 8.1 Pregnancy
- 8.2 Lactation
- 8.3 Females and Males of Reproductive Potential
- 8.4 Pediatric Use
- 8.5 Geriatric Use
- 8.6 Renal Impairment

10 OVERDOSAGE

11 DESCRIPTION

12 CLINICAL PHARMACOLOGY

- 12.1 Mechanism of Action
- 12.3 Pharmacokinetics

13 NONCLINICAL TOXICOLOGY

- 13.1 Carcinogenesis, Mutagenesis, Impairment of Fertility

14 CLINICAL STUDIES

- 14.1 Ovarian Cancer
- 14.2 Small Cell Lung Cancer
- 14.3 Cervical Cancer

15 REFERENCES

16 HOW SUPPLIED/STORAGE AND HANDLING

17 PATIENT COUNSELING INFORMATION

*Sections or subsections omitted from the full prescribing information are not listed.

FULL PRESCRIBING INFORMATION

WARNING: MYELOSUPPRESSION

HYCAMTIN can cause severe myelosuppression. Administer first cycle only to patients with baseline neutrophil counts of greater than or equal to 1,500/mm³ and platelet counts greater than or equal to 100,000/mm³. Monitor blood cell counts [see Warnings and Precautions (5.1)].

1 INDICATIONS AND USAGE

1.1 Ovarian Cancer

HYCAMTIN[®] for injection, as a single agent, is indicated for the treatment of patients with metastatic ovarian cancer after disease progression on or after initial or subsequent chemotherapy.

1.2 Small Cell Lung Cancer

HYCAMTIN for injection, as a single agent, is indicated for the treatment of patients with small cell lung cancer (SCLC) with platinum-sensitive disease who progressed at least 60 days after initiation of first-line chemotherapy.

1.3 Cervical Cancer

HYCAMTIN for injection, in combination with cisplatin, is indicated for the treatment of patients with Stage IV-B, recurrent, or persistent cervical cancer not amenable to curative treatment.

2 DOSAGE AND ADMINISTRATION

2.1 Important Safety Information

Verify dosage using body surface area. Do not exceed a single dose of 4 mg intravenously.

2.2 Recommended Dosage for Ovarian Cancer

The recommended dosage of HYCAMTIN for injection is 1.5 mg/m² by intravenous infusion over 30 minutes daily for 5 consecutive days, starting on Day 1 of a 21-day cycle until disease progression or unacceptable toxicity.

2.3 Recommended Dosage for Small Cell Lung Cancer (SCLC)

The recommended dosage of HYCAMTIN for injection is 1.5 mg/m² by intravenous infusion over 30 minutes daily for 5 consecutive days, starting on Day 1 of a 21-day cycle.

2.4 Recommended Dosage for Cervical Cancer

The recommended dosage of HYCAMTIN for injection is 0.75 mg/m² by intravenous infusion over 30 minutes daily on Days 1, 2, and 3, in combination with cisplatin 50 mg/m² on Day 1, of a 21-day cycle.

2.5 Dose Modifications for Adverse Reactions

Hematologic

Do not administer subsequent cycles of HYCAMTIN for injection until neutrophils recover to greater than 1,000/mm³, platelets recover to greater than 100,000/mm³, and hemoglobin levels recover to greater than or equal to 9 g/dL (with transfusion if necessary).

For HYCAMTIN for injection as a single agent, reduce the dose to 1.25 mg/m²/day for:

- neutrophil counts of less than 500/mm³ or administer granulocyte-colony stimulating factor (G-CSF) starting no sooner than 24 hours following the last dose
- platelet counts less than 25,000/mm³ during previous cycle

For HYCAMTIN for injection in combination with cisplatin, reduce the dose to 0.6 mg/m²/day (and further to 0.45 mg/m² if necessary) for:

- febrile neutropenia (defined as neutrophil counts less than 1,000/mm³ with temperature of greater than or equal to 38.0°C (100.4°F) or administer G-CSF starting no sooner than 24 hours following the last dose
- platelet counts less than 25,000/mm³ during previous cycle

2.6 Dosage Modification for Renal Impairment

For HYCAMTIN for injection as a single agent, reduce the dose to 0.75 mg/m²/day for patients with creatinine clearance (CL_{cr}) of 20 to 39 mL/min (calculated with the Cockcroft-Gault method using ideal body weight) [*see Clinical Pharmacology (12.3)*].

2.7 Preparation and Intravenous Administration

- Visually inspect for particulate matter and discoloration prior to administration, whenever solution and container permit.

Preparation

- Reconstitute each 4 mg vial of HYCAMTIN for injection with 4 mL Sterile Water for Injection, USP.
- Dilute the appropriate volume of the reconstituted solution in either 0.9% Sodium Chloride Intravenous Infusion, USP or 5% Dextrose in Water Injection, USP.

Stability

- Because the vials contain no preservative, use contents immediately after reconstitution. Discard any unused portion.
- Store reconstituted product diluted for infusion at approximately 20°C to 25°C (68°F to 77°F) protected from light for no more than 24 hours. Discard after 24 hours.

3 DOSAGE FORMS AND STRENGTHS

For injection: 4 mg (free base) of topotecan as a light yellow to greenish lyophilized powder in single-dose vial for reconstitution.

4 CONTRAINDICATIONS

HYCAMTIN is contraindicated in patients who have a history of severe hypersensitivity reactions to topotecan. Reactions have included anaphylactoid reactions [*see Adverse Reactions (6.2)*].

5 WARNINGS AND PRECAUTIONS

5.1 Myelosuppression

HYCAMTIN can cause severe myelosuppression.

Single Agent

Grade 4 neutropenia occurred in 78% of 879 patients, with a median duration of 7 days and was most common during Cycle 1 (58% of patients). Grade 4 neutropenia associated with infection occurred in 13% and febrile neutropenia occurred in 5%. Sepsis occurred in 4% of patients and was fatal in 1%. Grade 4 thrombocytopenia occurred in 27%, with a median duration of 5 days. Grade 3 or 4 anemia occurred in 37% of patients.

Combination with Cisplatin

Grade 4 neutropenia occurred in 48% and Grade 4 thrombocytopenia occurred in 7% of 147 patients. Grade 3 or 4 anemia occurred in 40% of patients.

Topotecan can cause fatal typhlitis (neutropenic enterocolitis). Consider the possibility of typhlitis in patients presenting with fever, neutropenia, and abdominal pain.

Administer the first cycle of Hycamtin for injection only to patients with a baseline neutrophil count of greater than or equal to $1,500/\text{mm}^3$ and a platelet count greater than or equal to $100,000/\text{mm}^3$. Monitor blood counts frequently during treatment. Withhold and reduce dose of Hycamtin for injection based on neutrophil counts, platelet counts and hemoglobin levels [see *Dosage and Administration (2.5)*].

5.2 Interstitial Lung Disease

Interstitial lung disease (ILD), including fatalities, can occur with Hycamtin. Underlying risk factors include history of ILD, pulmonary fibrosis, lung cancer, thoracic radiation, and use of pneumotoxic drugs or colony stimulating factors. Monitor for pulmonary symptoms indicative of ILD. Permanently discontinue Hycamtin for injection if ILD is confirmed.

5.3 Extravasation and Tissue Injury

Extravasation, including severe cases, can occur with Hycamtin for injection. If signs or symptoms of extravasation occur, immediately stop administration of Hycamtin for injection and institute recommended management procedures [see *Adverse Reactions (6.1)*].

5.4 Embryo-Fetal Toxicity

Based on animal data, Hycamtin can cause fetal harm when administered to a pregnant woman. Topotecan caused embryo lethality, fetotoxicity, and teratogenicity in rats and rabbits when administered during organogenesis. Advise women of the potential risk to a fetus. Advise females of reproductive potential to use effective contraception during treatment and for 6 months after the last dose of Hycamtin for injection. Advise males with a female partner of reproductive potential to use effective contraception during treatment with Hycamtin for injection and for 3 months after the last dose [see *Use in Specific Populations (8.1, 8.3)*, *Nonclinical Toxicology (13.1)*].

6 ADVERSE REACTIONS

The following serious adverse reactions are described elsewhere in the labeling:

- Myelosuppression [see *Warnings and Precautions (5.1)*]
- Interstitial Lung Disease [see *Warnings and Precautions (5.2)*]
- Extravasation and Tissue Injury [see *Warnings and Precautions (5.3)*]

6.1 Clinical Trials Experience

Because clinical trials are conducted under widely varying conditions, adverse reaction rates observed in the clinical trials of a drug cannot be directly compared with rates in the clinical trials of another drug and may not reflect the rates observed in practice.

The data in Warnings and Precautions reflect exposure to Hycamtin for injection from eight trials in which 879 patients with ovarian cancer or small cell lung cancer (SCLC) received Hycamtin for injection $1.5 \text{ mg}/\text{m}^2$ by intravenous infusion daily for 5 consecutive days, starting on Day 1 of a 21 day cycle and from one trial (Study GOG 0179) in which 147 patients with cervical cancer received Hycamtin for injection $0.75 \text{ mg}/\text{m}^2$ by intravenous infusion daily on Days 1, 2, and 3, with cisplatin $50 \text{ mg}/\text{m}^2$ by intravenous infusion on Day 1, of a 21-day cycle.

Ovarian Cancer

The safety of Hycamtin for injection was evaluated in a randomized trial conducted in 226 patients with metastatic ovarian cancer (Study 039) [see *Clinical Studies (14.1)*]. Table 1 shows the incidence of Grade 3 and 4 hematologic and non-hematologic adverse reactions that occurred in patients receiving Hycamtin for injection.

Table 1. Adverse Reactions Occurring in Greater than or Equal to 5% of Patients with Ovarian Cancer in Study 039

Adverse Reaction	Hycamtin for injection (n = 112)	Paclitaxel (n = 114)
	Grade 3-4 (%)	Grade 3-4 (%)
Hematologic		
Grade 4 neutropenia (< 500/mm ³)	80	21
Grade 3 or 4 anemia (Hgb < 8 g/dL)	41	6
Grade 4 thrombocytopenia (< 25,000/mm ³)	27	3
Febrile neutropenia	23	4
Non-Hematologic		
Infections		
Sepsis ^a	5	2
Respiratory, thoracic, and mediastinal		
Dyspnea	6	5
Gastrointestinal		
Vomiting	10	3
Nausea	10	2
Diarrhea	6	1
Abdominal pain	5	4
Intestinal obstruction	5	4
Constipation	5	0
General and administrative site conditions		
Fatigue	7	6
Pain ^b	5	7
Asthenia	5	3

^a Death related to sepsis occurred in 2% of patients receiving Hycamtin and 0% of patients receiving paclitaxel.

^b Pain includes body pain, skeletal pain, and back pain.

Small Cell Lung Cancer (SCLC)

The safety of Hycamtin for injection was evaluated in randomized, comparative trial in patients with recurrent or progressive SCLC (Study 090) [see *Clinical Studies (14.2)*]. Table 2 shows the Grade 3 or 4 hematologic and non-hematologic adverse reactions in patients with SCLC.

Table 2. Adverse Reactions Occurring in Greater than or Equal to 5% of Patients with Small Cell Lung Cancer in Study 090

Adverse Reactions	HYCAMTIN for injection (n = 107)	CAV ^c (n = 104)
	Grade 3-4 (%)	Grade 3-4 (%)
Hematologic		
Grade 4 neutropenia (< 500/mm ³)	70	72
Grade 3 or 4 anemia (Hgb < 8 g/dL)	42	20
Grade 4 thrombocytopenia (< 25,000/mm ³)	29	5
Febrile neutropenia	28	26
Non-Hematologic		
Infections		
Sepsis ^a	5	5
Respiratory, thoracic, and mediastinal		
Dyspnea	9	14
Pneumonia	8	6
Gastrointestinal		
Nausea	8	6
Abdominal pain	6	4
General and administrative site conditions		
Asthenia	9	7
Fatigue	6	10
Pain ^b	5	7

^a Death related to sepsis occurred in 3% of patients receiving HYCAMTIN and 1% of patients receiving CAV.

^b Pain includes body pain, skeletal pain, and back pain.

^c CAV = cyclophosphamide, doxorubicin and vincristine.

Hepatobiliary Disorders in Ovarian and Small Cell Lung Cancer

Based on the combined experience of 453 patients with metastatic ovarian cancer and 426 patients with SCLC treated with HYCAMTIN for injection, Grade 3 or 4 increases aspartate transaminase (AST) or alanine transaminase (ALT) occurred in 4% and Grade 3 or 4 elevated bilirubin occurred in less than 2%.

Cervical Cancer

The safety of HYCAMTIN for injection was evaluated in a comparative trial of HYCAMTIN with cisplatin versus cisplatin as a single agent in patients with cervical cancer (Study GOG 0179). Table 3 shows the hematologic and non-hematologic adverse reactions in patients with cervical cancer.

Table 3. Adverse Reactions Occurring in Greater than or Equal to 5% of Patients with Cervical Cancer (Between-Arm Difference \geq 2%)^a in Study GOG 0179

Adverse Reaction	HYCAMTIN for injection with Cisplatin (n = 140) %	Cisplatin (n = 144) %
Hematologic		
Neutropenia		
Grade 3 (< 1,000-500/mm ³)	26	1
Grade 4 (< 500/mm ³)	48	1
Anemia		
Grade 3 (Hgb < 8-6.5 g/dL)	34	19
Grade 4 (Hgb < 6.5 g/dL)	6	3
Thrombocytopenia		
Grade 3 (< 50,000-10,000/mm ³)	26	3
Grade 4 (< 10,000/mm ³)	7	0
Non-Hematologic^{b,c}		
General and administrative site conditions		
Constitutional ^d	69	62
Pain ^e	59	50
Gastrointestinal		
Vomiting	40	37
Stomatitis-pharyngitis	6	0
Other	63	56
Dermatology^f	48	20
Infection		
Febrile neutropenia ^f	28	18
Cardiovascular^f	25	15

^a Includes patients who were eligible and treated.

^b Severity based on using National Cancer Institute (NCI) Common Toxicity Criteria (CTC), Version 2.0.

^c Grades 1 through 4 only. There were 3 patients who experienced deaths with investigator-designated attribution. The first patient experienced a Grade 5 hemorrhage in which the drug-related thrombocytopenia aggravated the event. A second patient experienced bowel obstruction, cardiac arrest, pleural effusion, and respiratory failure which were not treatment-related but probably aggravated by treatment. A third patient experienced a pulmonary embolism and adult respiratory distress syndrome; the latter was indirectly treatment-related.

^d Constitutional includes fatigue (lethargy, malaise, asthenia), fever (in the absence of neutropenia), rigors, chills, sweating, and weight gain or loss.

^e Pain includes abdominal pain or cramping, arthralgia, bone pain, chest pain (non-cardiac and non-pleuritic), dysmenorrhea, dyspareunia, earache, headache, hepatic pain, myalgia, neuropathic pain, pain due to radiation, pelvic pain, pleuritic pain, rectal or perirectal pain, and tumor pain.

^f High-level terms were included if the between-arm difference was \geq 10%.

6.2 Postmarketing Experience

The following reactions have been identified during post approval use of HYCAMTIN. Because these reactions are reported voluntarily from a population of unknown size, it is not always possible to reliably estimate their frequency or establish a causal relationship to drug exposure.

Blood and Lymphatic System: severe bleeding (in association with thrombocytopenia)

Hypersensitivity: allergic manifestations, anaphylactoid reactions, angioedema

Gastrointestinal: abdominal pain potentially associated with neutropenic enterocolitis, gastrointestinal

perforation

Pulmonary: interstitial lung disease

Skin and Subcutaneous Tissue: severe dermatitis, severe pruritus

General and Administration Site Conditions: extravasation, mucosal inflammation

8 USE IN SPECIFIC POPULATIONS

8.1 Pregnancy

Risk Summary

Based on animal data and its mechanism of action, HYCAMTIN can cause fetal harm when administered to a pregnant woman. There are no available clinical data on the use of HYCAMTIN in pregnancy. Topotecan caused embryolethality, fetotoxicity, and teratogenicity in rats and rabbits when administered during organogenesis at doses similar to the clinical dose (*see Data*). Advise pregnant women of the potential risk to a fetus.

In the U.S. general population, the background risk of major birth defects is 2% to 4% and of miscarriage is 15% to 20% of clinically recognized pregnancies.

Data

Animal Data

In rabbits, an intravenous dose of 0.10 mg/kg/day [about equal to the 1.5 mg/m² clinical dose based on body surface area (BSA)] given on Days 6 through 20 of gestation caused maternal toxicity, embryolethality and reduced fetal body weight. In the rat, an intravenous dose of 0.23 mg/kg/day (about equal to the 1.5 mg/m² clinical dose based on BSA) given for 14 days before mating through gestation Day 6 caused fetal resorption, microphthalmia, pre-implant loss, and mild maternal toxicity. Administration of an intravenous dose of 0.10 mg/kg/day (about half the 1.5 mg/m² clinical dose based on BSA) given to rats on Days 6 through 17 of gestation caused an increase in post-implantation mortality. This dose also caused an increase in total fetal malformations. The most frequent malformations were of the eye (microphthalmia, anophthalmia, rosette formation of the retina, coloboma of the retina, ectopic orbit), brain (dilated lateral and third ventricles), skull, and vertebrae.

8.2 Lactation

Risk Summary

There are no data on the presence of topotecan or its metabolites in human milk or their effects on the breastfed infant or on milk production. Lactating rats excrete high concentrations of topotecan in milk (*see Data*). Because of the potential for serious adverse reactions in breastfed infants, advise women not to breastfeed during treatment with HYCAMTIN for injection and for 1 week after the last dose.

Data

Following intravenous administration of topotecan to lactating rats at a dose of 4.72 mg/m² (about twice the 1.5 mg/m² clinical dose based on BSA) to lactating rats, topotecan was excreted into milk at concentrations up to 48-fold higher than those in plasma.

8.3 Females and Males of Reproductive Potential

Pregnancy Testing

Verify pregnancy status of females of reproductive potential prior to initiating HYCAMTIN for injection [see *Use in Specific Populations (8.1)*].

Contraception

HYCAMTIN can cause fetal harm when administered to a pregnant woman [see *Use in Specific Populations (8.1)*].

Females

Advise females of reproductive potential to use effective contraception during treatment with HYCAMTIN for injection and for 6 months after the last dose.

Males

HYCAMTIN may damage spermatozoa, resulting in possible genetic and fetal abnormalities. Advise males with a female partner of reproductive potential to use effective contraception during treatment with HYCAMTIN for injection and for 3 months after the last dose [see *Nonclinical Toxicology (13.1)*].

Infertility

Females

HYCAMTIN can have both acute and long-term effects on fertility [see *Nonclinical Toxicology (13.1)*].

Males

Effects on spermatogenesis occurred in animals administered topotecan [see *Nonclinical Toxicology (13.1)*].

8.4 Pediatric Use

Safety and effectiveness in pediatric patients have not been established.

8.5 Geriatric Use

Of the 879 patients with metastatic ovarian cancer or small cell lung cancer in clinical trials of HYCAMTIN for injection, 32% were aged 65 years and older, while 3.8% were aged 75 years and older. Of the 140 patients with Stage IV-B, relapsed, or refractory cervical cancer in clinical trials of HYCAMTIN for injection who received HYCAMTIN with cisplatin in the randomized clinical trial, 6% were aged 65 years and older, while 3% were aged 75 years and older. No overall differences in effectiveness or safety were observed between these patients and younger patients and other reported clinical experience has not identified differences in responses between the elderly and younger patients.

8.6 Renal Impairment

Reduce the dose of HYCAMTIN for injection in patients with a CL_{cr} of 20 to 39 mL/min [see *Dosage and Administration (2.4)*, *Clinical Pharmacology (12.3)*]. No dosage adjustment is recommended for patients with CL_{cr} greater than or equal to 40 mL/min. Insufficient data are available in patients with CL_{cr} less than 20 mL/min to provide a dosage recommendation for HYCAMTIN for injection.

10 OVERDOSAGE

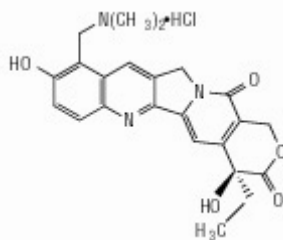
Overdoses (up to 10-fold of the recommended dose) have occurred in patients receiving intravenous topotecan. The primary complication of overdose is myelosuppression. Elevated hepatic enzymes, mucositis, gastrointestinal toxicity, and skin toxicity have occurred with overdoses. If an overdose is suspected, monitor the patient closely for myelosuppression and institute supportive-care measures as appropriate.

11 DESCRIPTION

Topotecan is a topoisomerase inhibitor. The chemical name for topotecan hydrochloride is (S)-10-[(dimethylamino)methyl]-4-ethyl-4,9-dihydroxy-1H-pyrano[3',4':6,7]indolizino [1,2-b]quinoline-3,14-

(4*H*,12*H*)-dione monohydrochloride. The molecular formula is C₂₃H₂₃N₃O₅•HCl and the molecular weight is 457.9 g/mol. It is soluble in water and melts with decomposition at 213°C to 218°C.

Topotecan hydrochloride has the following structural formula:



HYCAMTIN (topotecan) for injection, for intravenous use is supplied as a sterile, lyophilized, buffered, light yellow to greenish powder available in single-dose vials. Each 4 mg vial contains 4 mg topotecan hydrochloride as free base. The reconstituted solution ranges in color from yellow to yellow-green.

Inactive ingredients are mannitol, 48 mg, and tartaric acid, 20 mg. Hydrochloric acid and sodium hydroxide may be used to adjust the pH. The solution pH ranges from 2.5 to 3.5.

12 CLINICAL PHARMACOLOGY

12.1 Mechanism of Action

Topoisomerase I relieves torsional strain in DNA by inducing reversible single-strand breaks. Topotecan binds to the topoisomerase I-DNA complex and prevents re-ligation of these single-strand breaks. The cytotoxicity of topotecan is thought to be due to double-strand DNA damage produced during DNA synthesis, when replication enzymes interact with the ternary complex formed by topotecan, topoisomerase I, and DNA. Mammalian cells cannot efficiently repair these double-strand breaks.

12.3 Pharmacokinetics

Following administration of HYCAMTIN for injection at doses of 0.5 to 1.5 mg/m² (0.1 to 0.3 times the recommended single agent dose) administered as a 30-minute infusion, area under the curve (AUC) increases proportionally with dose.

Distribution

Protein binding of topotecan is approximately 35%.

Elimination

The terminal half-life of topotecan is 2 to 3 hours following intravenous administration.

Metabolism

Topotecan undergoes a reversible pH-dependent hydrolysis of its pharmacologically active lactone moiety. At pH less than or equal to 4, the lactone is exclusively present, whereas the ring-opened hydroxy-acid form predominates at physiologic pH. Topotecan is metabolized to an N-demethylated metabolite in vitro. The mean metabolite: parent AUC ratio was about 3% for total topotecan and topotecan lactone following intravenous administration.

Excretion

The overall recovery of total topotecan and its N-desmethyl metabolite in urine and feces over 9 days averaged 73% ± 2% following an intravenous dose. Mean values of 51% ± 3% as total topotecan and 3% ± 1% as N-desmethyl topotecan were excreted in the urine. Fecal elimination of total topotecan accounted for 18% ± 4% while fecal elimination of N-desmethyl topotecan was 1.7% ± 0.6%. An O-glucuronidation metabolite of topotecan and N-desmethyl topotecan has been identified in the urine.

Specific Populations

No clinically significant differences in the pharmacokinetics of topotecan were observed based on age, sex, or

hepatic impairment following intravenous administration.

Patients with Renal Impairment

Compared to patients with CLcr (calculated by the Cockcroft-Gault method using ideal body weight) greater than 60 mL/min, plasma clearance of topotecan lactone decreased by 33% in patients with CLcr 40-60 mL/min and decreased 65% in patients with CLcr 20-39 mL/min. The effect on topotecan pharmacokinetics in patients with CLcr less than 20 mL/min is unknown [see *Dosage and Administration (2.6)*].

Drug Interaction Studies

Clinical Studies

No clinically significant changes in topotecan pharmacokinetics were observed when coadministered cisplatin.

No clinically significant changes in the pharmacokinetics of free platinum were observed in patients coadministered cisplatin with topotecan.

In Vitro Studies

Topotecan does not inhibit CYP1A2, CYP2A6, CYP2C8/9, CYP2C19, CYP2D6, CYP2E, CYP3A, or CYP4A or dihydropyrimidine dehydrogenase.

13 NONCLINICAL TOXICOLOGY

13.1 Carcinogenesis, Mutagenesis, Impairment of Fertility

Carcinogenicity testing of topotecan has not been performed. Topotecan is known to be genotoxic to mammalian cells and is a probable carcinogen. Topotecan was mutagenic to L5178Y mouse lymphoma cells and clastogenic to cultured human lymphocytes with and without metabolic activation. It was also clastogenic to mouse bone marrow. Topotecan did not cause mutations in bacterial cells.

Topotecan given to female rats prior to mating at an intravenous dose of 1.4 mg/m² [about equal to the clinical dose based on body surface area (BSA)] caused superovulation possibly related to inhibition of follicular atresia. This dose given to pregnant female rats also caused increased pre-implantation loss. Studies in dogs given at an intravenous dose of 0.4 mg/m² (about 0.25 times the clinical dose based on BSA) of topotecan daily for a month suggest that treatment may cause an increase in the incidence of multinucleated spermatogonial giant cells in the testes.

14 CLINICAL STUDIES

14.1 Ovarian Cancer

The efficacy of HYCAMTIN for injection was evaluated in two clinical trials of 223 patients with metastatic ovarian cancer. All patients had disease that had recurred on, or was unresponsive to, a platinum-containing regimen. Patients in these trials received an initial dose of 1.5 mg/m² as an intravenous infusion for 5 consecutive days, starting on Day 1 of a 21-day cycle.

One trial (Study 039) was a randomized trial of 112 patients who received HYCAMTIN for injection and of 114 patients who received paclitaxel (175 mg/m² intravenously over 3 hours on Day 1 of a 21-day cycle). All patients had recurrent ovarian cancer after a platinum-containing regimen or had not responded to at least 1 prior platinum-containing regimen. Patients who did not respond to the trial therapy, or who progressed, could be given the alternative treatment. The efficacy outcome measures were overall response rate, response duration, time to progression, and overall survival (OS).

The results of the trial did not show statistically significant improvements in response rates, response duration, time to progression, and OS as shown in Table 4.

Table 4. Efficacy Results in Ovarian Cancer in Study 039

Parameter	HYCAMTIN for injection (n = 112)	Paclitaxel (n = 114)
Overall response rate (95% CI)	21% (13%, 28%)	14% (8%, 20%)
Complete response rate	5%	3%
Partial response rate	16%	11%
Response duration ^a (months)		
Median (95% CI)	6 (5.1, 7.6)	5 (3.7, 7.8)
Time to progression (months)		
Median (95% CI)	4.4 (2.8, 5.4)	3.4 (2.7, 4.2)
Hazard ratio (95% CI)	0.76 (0.57, 1.02)	
Overall survival (months)		
Median (95% CI)	14.5 (10.7, 16.5)	12.2 (9.7, 15.8)
Hazard ratio (95% CI)	0.97 (0.71, 1.34)	

Abbreviation: CI, confidence interval.

^a The calculation for response duration was based on the interval between first response and time to progression.

The median time to response was 7.6 weeks (3.1 weeks to 5 months) with HYCAMTIN for injection compared with 6 weeks (2.4 weeks to 4.1 months) with paclitaxel. In the cross-over phase, 13% of 61 patients who received HYCAMTIN after paclitaxel had a partial response and 10% of 49 patients who received paclitaxel after HYCAMTIN had a response (2 complete responses).

HYCAMTIN for injection was active in ovarian cancer patients who had developed resistance to platinum-containing therapy, defined as tumor progression while on, or tumor relapse within 6 months after completion of, a platinum-containing regimen. One complete and 6 partial responses were seen in 60 patients, for a response rate of 12%. In the same trial, there were no complete responders and 4 partial responders on the paclitaxel arm, for a response rate of 7%.

HYCAMTIN for injection was also studied in an open-label, non-comparative trial in 111 patients with recurrent ovarian cancer after treatment with a platinum-containing regimen, or who had not responded to 1 prior platinum-containing regimen. The response rate was 14% (95% CI: 7%, 20%). The median duration of response was 5 months (4.6 weeks to 9.6 months). The time to progression was 2.6 months (5 days to 1.4 years). The median survival was 1.3 years (1.4 weeks, to 2.2 years).

14.2 Small Cell Lung Cancer

The efficacy of HYCAMTIN for injection was evaluated in 426 patients with recurrent or progressive small cell lung cancer (SCLC) in a randomized, comparative trial and in 3 single-arm trials.

Randomized Comparative Trial

In a randomized, comparative trial, 211 patients were randomized 1:1 to receive HYCAMTIN for injection (1.5 mg/m² once daily intravenously for 5 days starting on Day 1 of a 21-day cycle) or CAV (cyclophosphamide 1,000 mg/m², doxorubicin 45 mg/m², vincristine 2 mg administered sequentially on Day 1 of a 21-day cycle). All patients were considered sensitive to first-line chemotherapy (responders who then subsequently progressed greater than or equal to 60 days after completion of first-line therapy). A total of 77% of patients treated with HYCAMTIN for injection and 79% of patients treated with CAV received platinum/etoposide with or without other agents as first-line chemotherapy. The efficacy outcome measures were overall response rate, response duration, time to progression or OS.

The results of the trial did not show statistically significant improvements in response rate, response duration, time to progression, or OS as shown in Table 5.

Table 5. Efficacy Results in Patients with Small Cell Lung Cancer Sensitive to First-Line Chemotherapy in Study 090

Parameter	HYCAMTIN for injection (n = 107)	CAV ^b (n = 104)
Overall response rate (95% CI)	24% (16%, 32%)	18% (11%, 26%)
Complete response rate	0%	1%
Partial response rate	24%	17%
Response duration^a (months)		
Median (95% CI)	3.3 (3, 4.1)	3.5 (3, 5.3)
Time to progression (months)		
Median (95% CI)	3.1 (2.6, 4.1)	2.8 (2.5, 3.2)
Hazard ratio (95% CI)	0.92 (0.69, 1.22)	
Overall survival (months)		
Median (95% CI)	5.8 (4.7, 6.8)	5.7 (5, 7)
Hazard ratio (95% CI)	1.04 (0.78, 1.39)	

Abbreviations: CI, confidence interval.

^a The calculation for duration of response was based on the interval between first response and time to progression.

^b CAV = cyclophosphamide, doxorubicin and vincristine.

The median time to response was similar in both arms: HYCAMTIN, 6 weeks (2.4 weeks to 3.6 months) versus CAV, 6 weeks (5.1 weeks to 4.2 months).

Changes on a disease-related symptom scale are presented in Table 6. It should be noted that not all patients had all symptoms, nor did all patients respond to all questions. Each symptom was rated on a 4-category scale with an improvement defined as a change in 1 category from baseline sustained over 2 courses. Limitations in interpretation of the rating scale and responses preclude formal statistical analysis.

Table 6. Symptom Improvement^a in Patients with Small Cell Lung Cancer in Study 090

Symptom	HYCAMTIN for injection (n = 107)		CAV (n = 104)	
	n ^b	(%)	n ^b	(%)
Shortness of breath	68	28	61	7
Interference with daily activity	67	27	63	11
Fatigue	70	23	65	9
Hoarseness	40	33	38	13
Cough	69	25	61	15
Insomnia	57	33	53	19
Anorexia	56	32	57	16
Chest pain	44	25	41	17
Hemoptysis	15	27	12	33

^a Defined as improvement sustained over at least 2 courses compared with baseline.

^b Number of patients with baseline and at least 1 post-baseline assessment.

Single-Arm Trials

HYCAMTIN for injection was also studied in three open-label, non-comparative trials (Studies 014, 092 and 053) in a total of 319 patients with recurrent or progressive SCLC after treatment with first-line chemotherapy. In all three trials, patients were stratified as either sensitive (responders who then subsequently progressed greater than or equal to 90 days after completion of first-line therapy) or refractory (no response to first-line chemotherapy or who responded to first-line therapy and then progressed within 90 days of completing first-line therapy). Response rates ranged from 11% to 31% for sensitive patients and 2% to 7% for refractory patients. Median time to progression and median survival were similar in all three trials and the comparative trial.

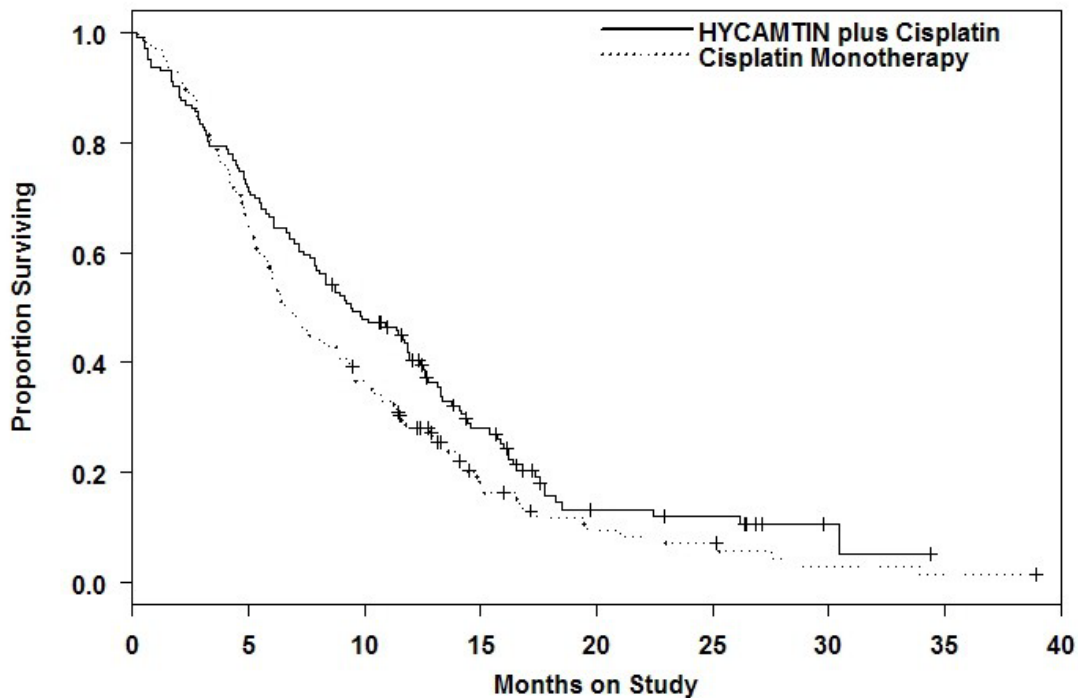
14.3 Cervical Cancer

The efficacy of HYCAMTIN for injection was evaluated in a multi-center, randomized (1:1), open-label study (Study GOG 0179) conducted in 147 patients with histologically confirmed Stage IV-B, recurrent, or persistent

cervical cancer considered not amenable to curative treatment with surgery and/or radiation. Patients were randomized to Hycamtin for injection (0.75 mg/m² once daily intravenously for 3 consecutive days starting on Day 1 of a 21-day cycle) with cisplatin (50 mg/m² intravenously on Day 1) or cisplatin as a single agent. Fifty-six percent of patients treated with Hycamtin with cisplatin and 56% of patients treated with cisplatin had received prior cisplatin with or without other agents as first-line chemotherapy. The efficacy outcome measure was OS.

Median OS of eligible patients receiving Hycamtin with cisplatin was 9.4 months (95% CI: 7.9, 11.9) compared with 6.5 months (95% CI: 5.8, 8.8) among patients randomized to cisplatin alone with a log rank *P*-value of 0.033 (significance level was 0.044 after adjusting for the interim analysis). The unadjusted hazard ratio for OS was 0.76 (95% CI: 0.59, 0.98).

Figure 1. Kaplan-Meier Curves for Overall Survival in Cervical Cancer in Study GOG 0179



	Number at Risk								
HYCAMTIN plus Cisplatin	147	104	69	32	10	8	2	0	0
Cisplatin Monotherapy	146	93	52	17	8	6	2	1	0

15 REFERENCES

1. "OSHA Hazardous Drugs." OSHA. <http://www.osha.gov/SLTC/hazardousdrugs/index.html>.

16 HOW SUPPLIED/STORAGE AND HANDLING

HYCAMTIN for injection is supplied as a sterile, lyophilized, buffered, light yellow to greenish powder for reconstitution in 4-mg (free base) single-dose vials.

NDC 0078-0674-61 (package of 1)

Store between 20°C and 25°C (68°F and 77°F) [see USP Controlled Room Temperature] in original carton. Protect from light.

HYCAMTIN for injection is a cytotoxic drug. Follow applicable handling and disposal procedures.

17 PATIENT COUNSELING INFORMATION

Myelosuppression

Inform patients that HYCAMTIN decreases blood cell counts such as white blood cells, platelets, and red blood cells. Advise patients to notify their healthcare provider promptly for fever, other signs of infection, or bleeding [see Warnings and Precautions (5.1)].

Interstitial Lung Disease (ILD)

Inform patients of the risks of severe ILD. Advise patients to contact their healthcare provider immediately to report new or worsening respiratory symptoms [see Warnings and Precautions (5.2)].

Embryo-Fetal Toxicity

Advise females of reproductive potential and males with female partners of reproductive potential of the potential risk to a fetus. Advise women to contact their healthcare provider if they become pregnant, or if

pregnancy is suspected during treatment with HYCAMTIN for injection [see *Warnings and Precautions (5.4), Use in Specific Populations (8.1, 8.3)*].

Advise females of reproductive potential to use effective contraception during treatment and for 6 months after the last dose of HYCAMTIN for injection [see *Use in Specific Populations (8.1, 8.3)*].

Advise males with a female partner of reproductive potential to use effective contraception during treatment and for 3 months after the last dose of HYCAMTIN for injection [see *Use in Specific Populations (8.1, 8.3), Nonclinical Toxicology (13.1)*].

Lactation

Advise women to discontinue breastfeeding during treatment and for 1 week after the last dose of HYCAMTIN for injection [see *Use in Specific Populations (8.2)*].

Infertility

Advise male and female patients of the potential risk for impaired fertility [see *Use in Specific Populations (8.3), Nonclinical Toxicology (13.1)*].

Asthenia and Fatigue

Advise patients that HYCAMTIN for injection may cause asthenia or fatigue. These symptoms may impair the ability to safely drive or operate machinery.

Distributed by:

Novartis Pharmaceuticals Corporation
East Hanover, New Jersey 07936

© Novartis

T201X-XX